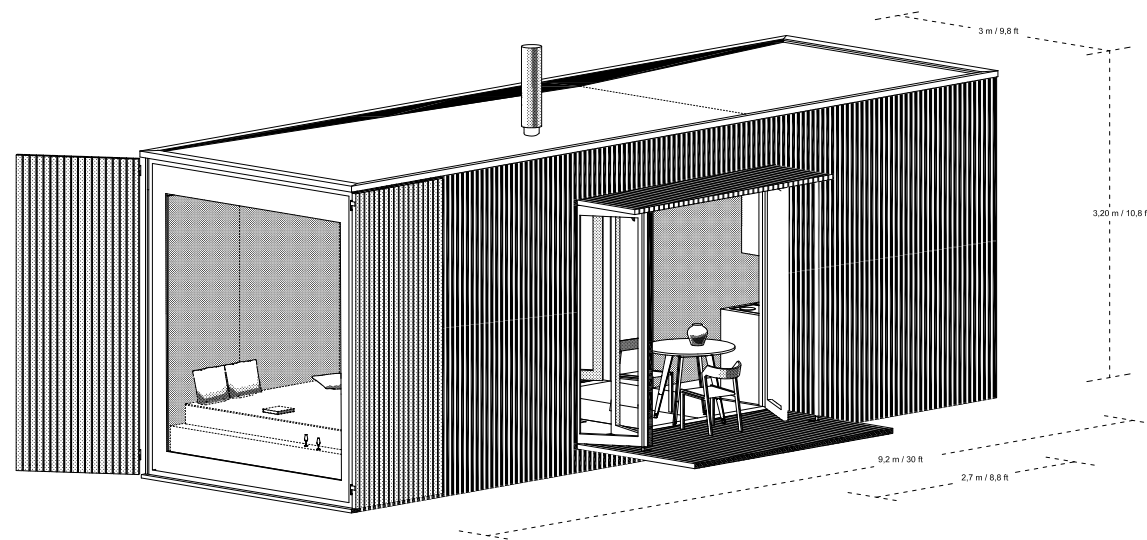




Vision

Ark-Shelter wants to go back to the basics by proving a living place within nature.

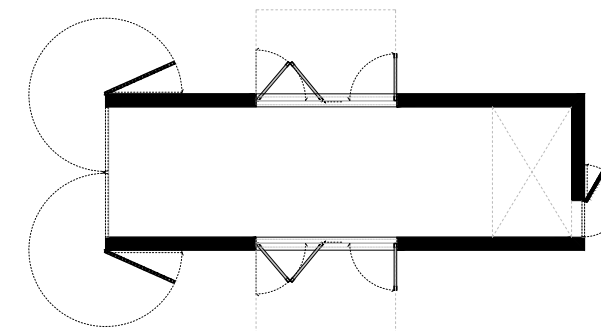
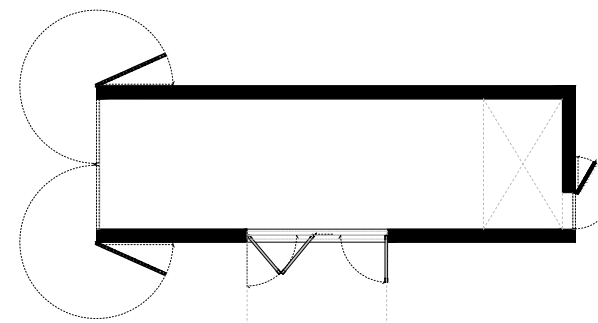
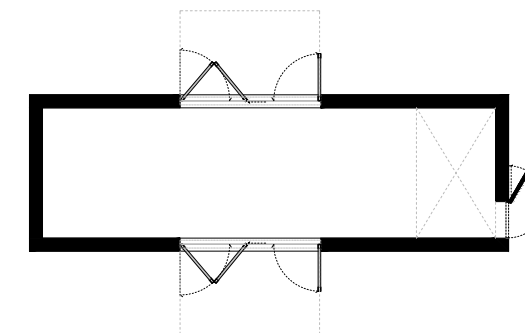
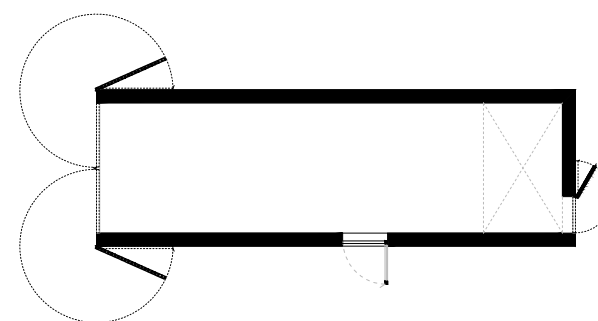
Ark's mobile and zero impact design allow you to change destinations while leaving nature untouched. The minimalist design blends with the landscape letting you enjoy nature by becoming part of it. The small impact let us carry a much smaller environmental footprint, reduces the amount of resources as we humans consume to live, and encourages us to consume less in general. They let us move towards a more simplistic way of life and open up the possibility for a more sustainable future.

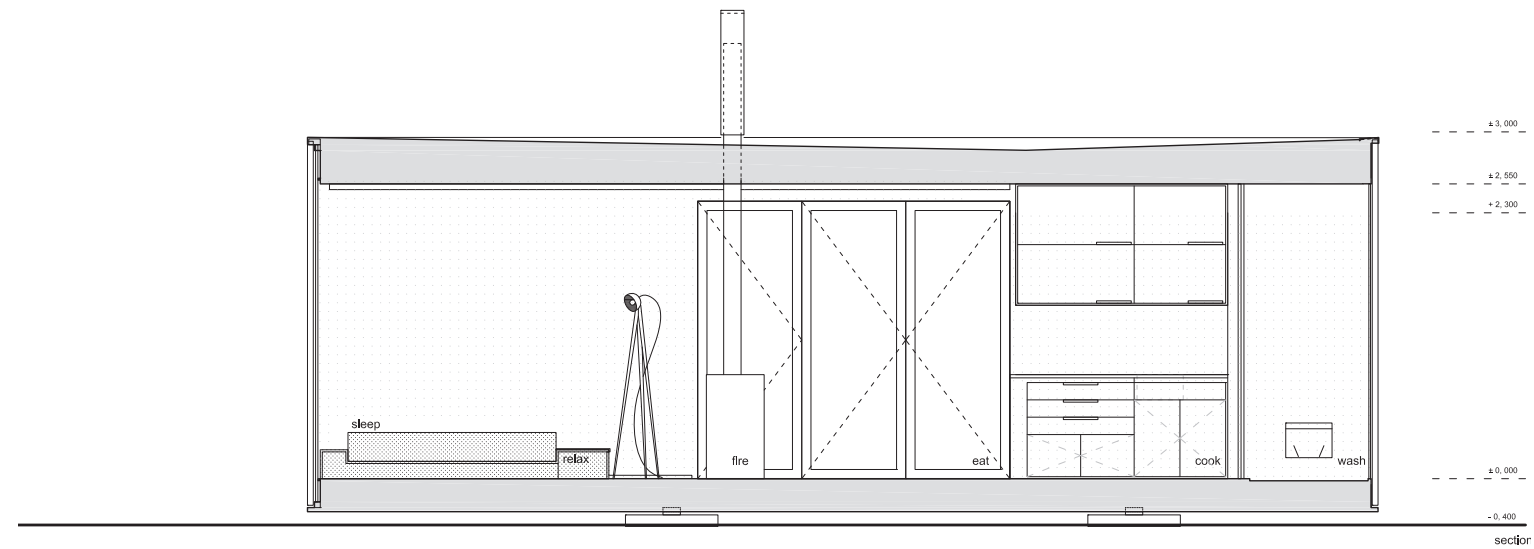
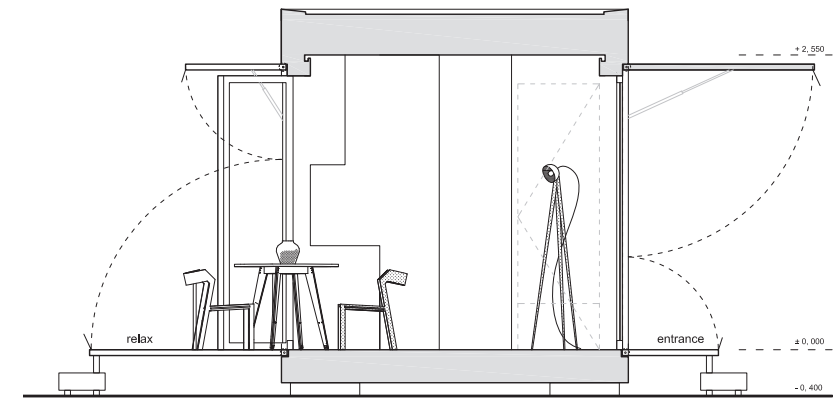
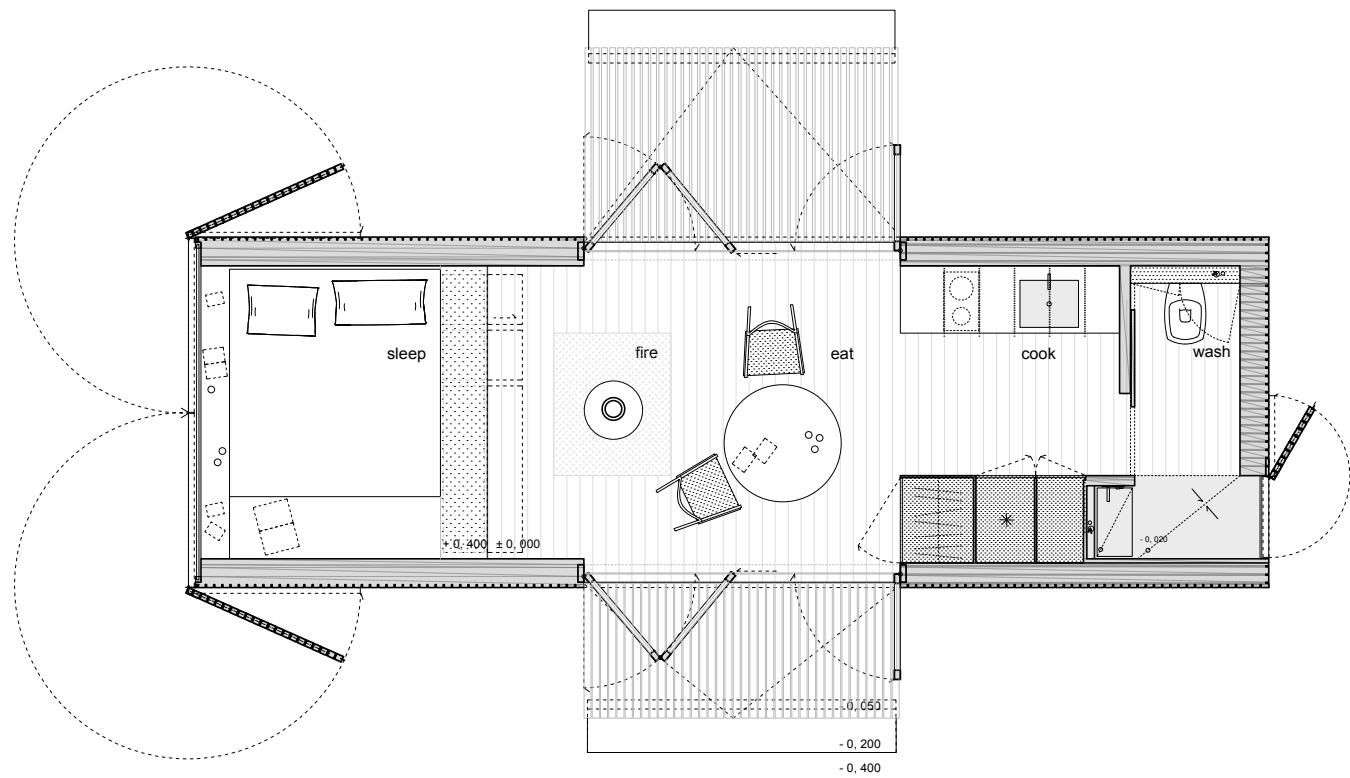


Shelter

Our Shelter S module is all about living simply, beautifully and yet still with everything you need. It's about freedom debt and having the economic freedom to live a bigger life, instead of having a bigger house. They contain a living area, sleeping room, kitchen and bathroom and the complete construction is constructed out of sustainable wood.

It is possible to build these homes to be entirely self-contained and off-grid, generating their own water, and electricity. Characteristic of these outbuildings are the large windows that ensure maximum outdoor experience and optimum light intensity.





/ 3 meter wide and up to 12m length /





Endless possibilities

Our unique design has no fixed foundations, which gives you the advantage to have your ark wherever you can imagine! Whether you see yourself watching the moon's rays reflect on the lake, camping in a large grass field surrounded with wild horses, waking up to the sound of animals in the woods, enjoying your morning coffee in a peaceful atmosphere; Ark-shelter makes it possible. Our mobility offers you the opportunity to escape your daily life by bringing you closer to nature.

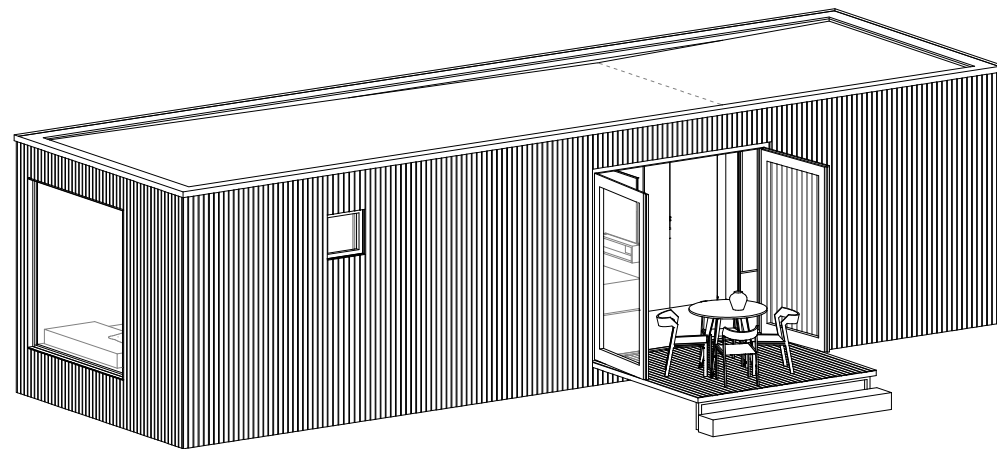




Furniture

Ark provides a total experience. All furniture for the kitchen, bathroom and living area are included and were uniquely designed by Ark for your shelter. The double bed can easily transform into a cosy couch facing the fireplace or the frameless window.

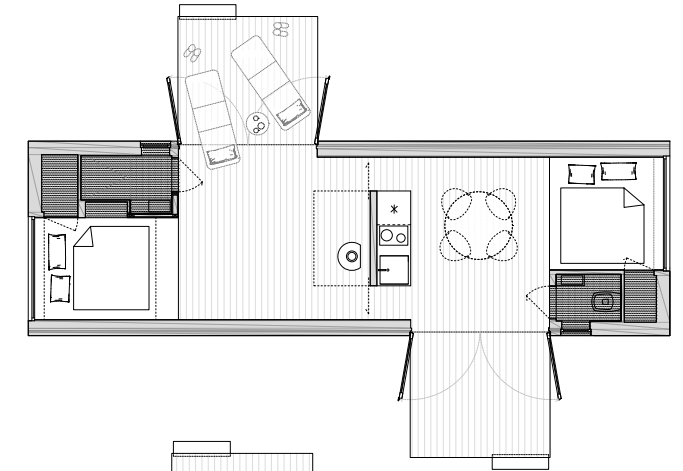




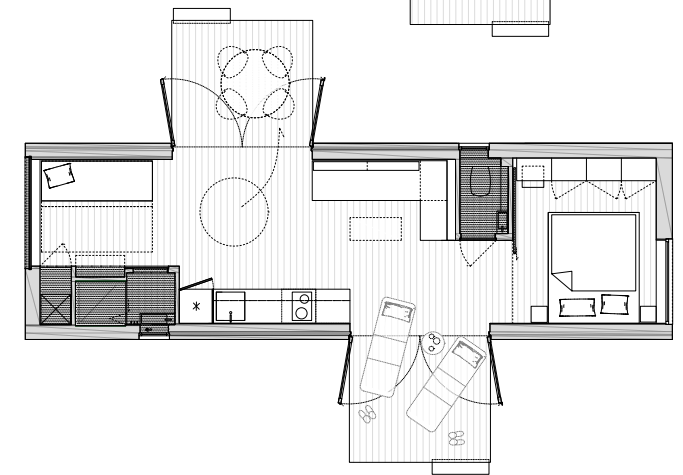
Lodge

The lodges of Ark-Shelter are made for families, a group of friends or just a bigger living space. Two separated bedrooms are installed with one at a side with a big window to have enough natural incoming light. The large living space, and big windows create an all-inclusive living environment. Another major fact is that there are convertible spaces such as a trundle bed that offers you the ability for two more people to stay in the lodge. The two big terraces one on each side let you enjoy the nature to the fullest.

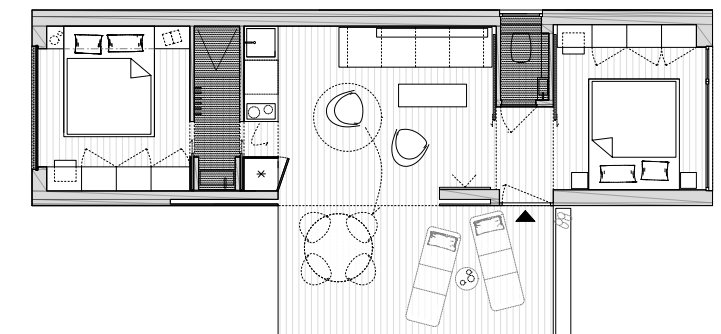
/ loft 3,5 x 11,5 m. /



/ camp 3,5 x 11,5 m. /

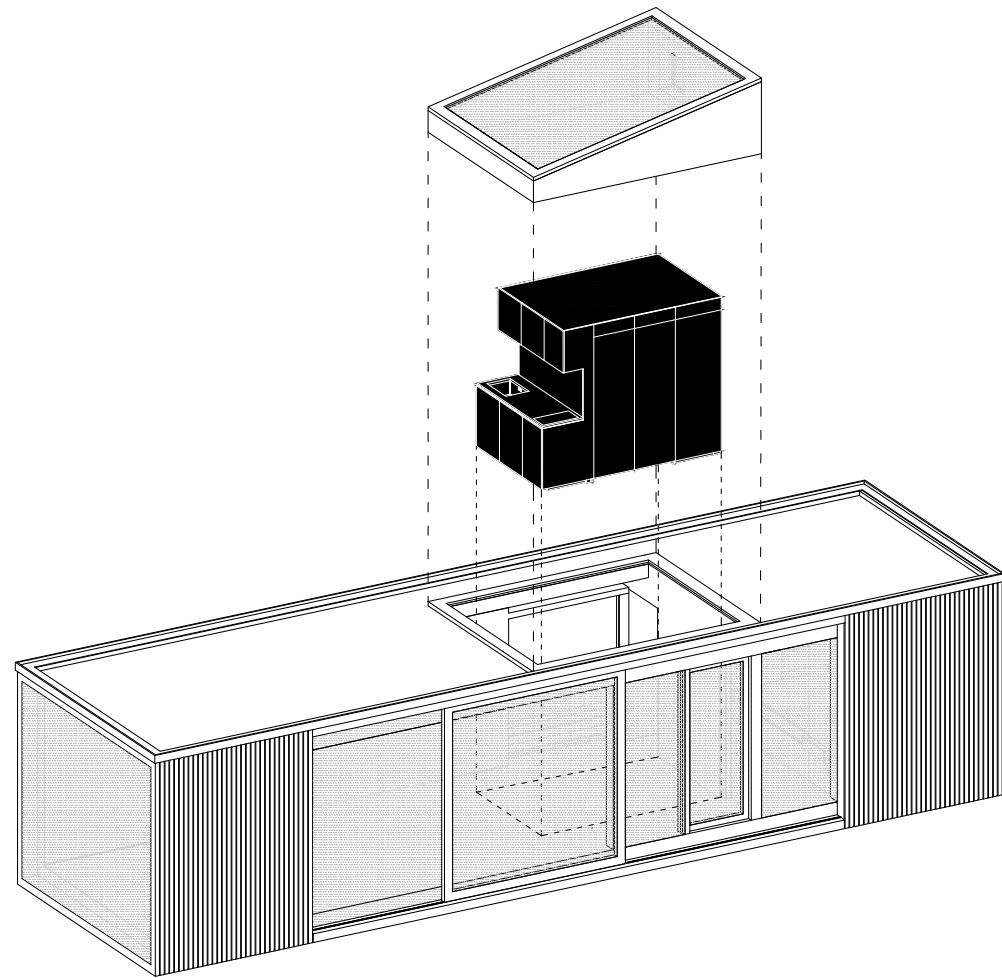


/ family 3,5 x 12m. /



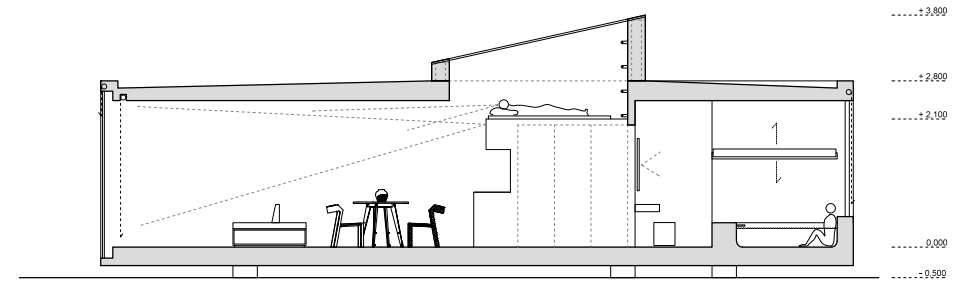
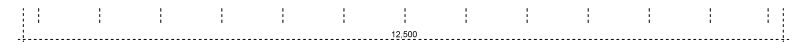
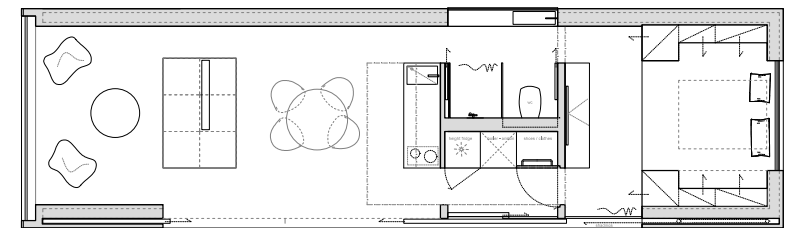
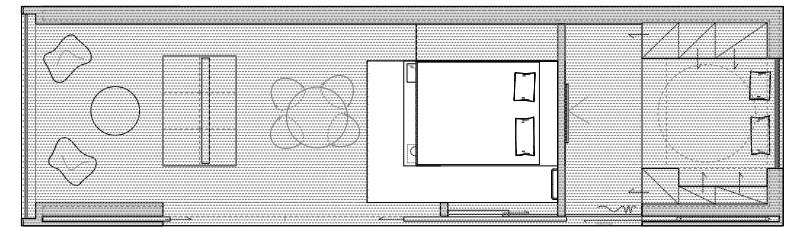
/ based 3,5m. wide cabin till 12,5m. length /





Lodge - into the wild

Nowadays we live in a world where we are extremely busy and from time to time we need to escape from it. Escape from the stress, duties and civilizations back to our roots where it all started.





.....
The past 3 years we have been working on re-designing, building and testing different types of Ark-Shelter. We want to create a place that gives you comfort in the heart of the nature and gives you the perfect setting for a detox of your mind. From this perspective we created a new Shelter type: "into the wild cabin". With his 5 openings all around we wanted to create a visual focus of the nature all around. Each opening brings in another atmosphere of the nature
.....

.....
There is a big openable wall side and the big front glazing makes you feel like you're sitting outside. The milk glass window in the bathroom gives you the all-natural incoming light you need. We've made an extra module which is set on the roof and has a big window so you can sleep under a sky full of stars. The Shelter is created that it merges with the nature and it's tricky how it covers the complex and intelligent system which automatically works with the space and light.
.....



.....
Thanks to a automatical system the heating, cooling and shadings can be pre-programmed. The double-bed goes up automatically in the ceiling and beneath the bed there is a hidden jacuzzi, this creates a new relaxing area. The Shelter can work completely off-grid through solar panels, batteries and rain water collector.
.....

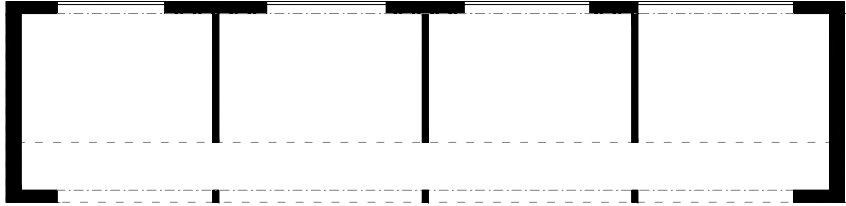
.....
The 40m2 has a central black box in the middle that creates 5 different areas, every single side is part of a particular area in the Shelter. The sliding doors in the corners creates more space and the different areas can be totally divided.
.....





Thanks to the extra module on top we have more incoming light from above for the entrance. The left part of the box works as a kitchen and a relaxing zone, the back of the box has a shower and a sink next to the window. Next to the bathroom we have the big bed and the jacuzzi. The extra module on top is another bedroom that you can also easily turn into a relaxing mediation zone.

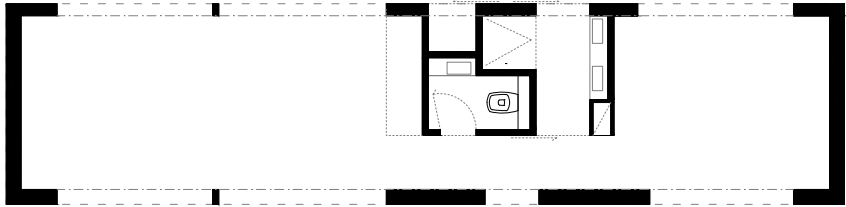
This new Shelter has been a totally new challenge for us and it's all about the details, we wanted to create a place that has it all in less possible space but with all the possible luxury. It's a Shelter that will not become boring easily thanks to all the new features and design.



MODUL C / 42 m²



MODUL B / 42 m²

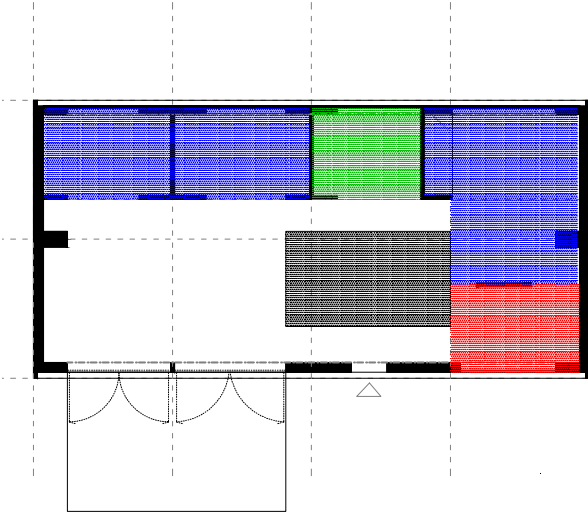


MODUL A / 42 m²

A / B / C cabin based language by Ark_shelter

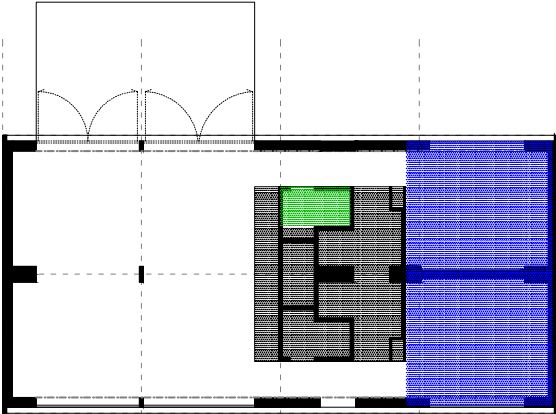
A / B / C cabin based HOUSES

A / B / C cabin houses 98 m² alternatives



cabin C

cabin A



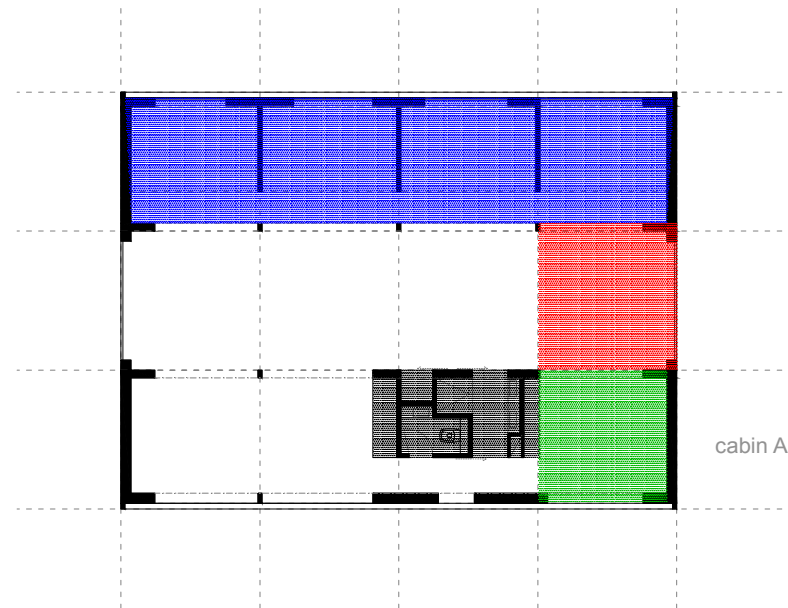
cabin A

cabin A

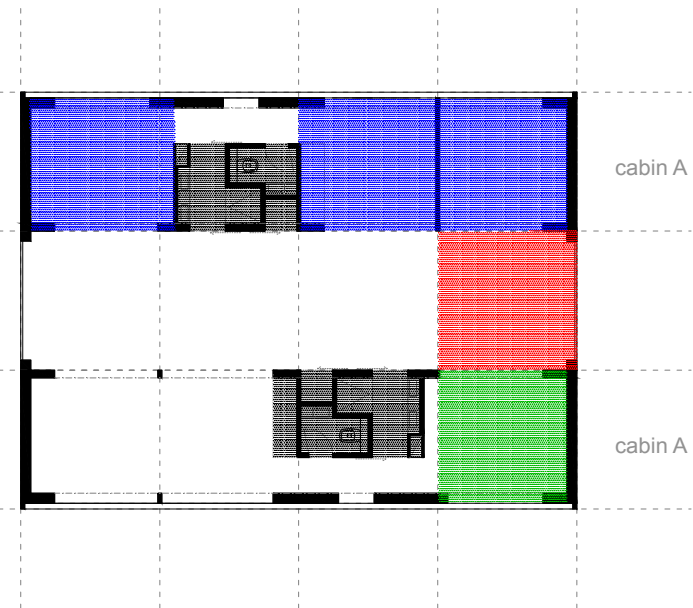
98 m² effective alternative

98 m² comfort alternative

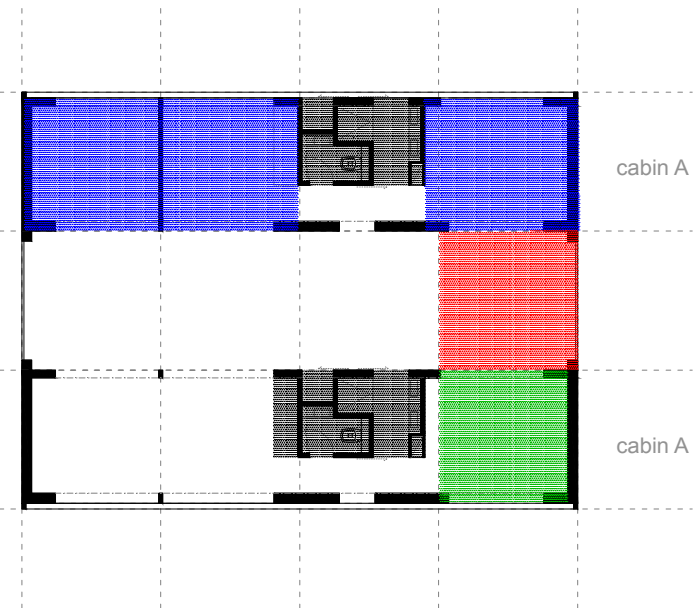
- open space living room with kitchen
- home office
- service background
- night zone -sleeping
- hygiene background



147 m² A alternative



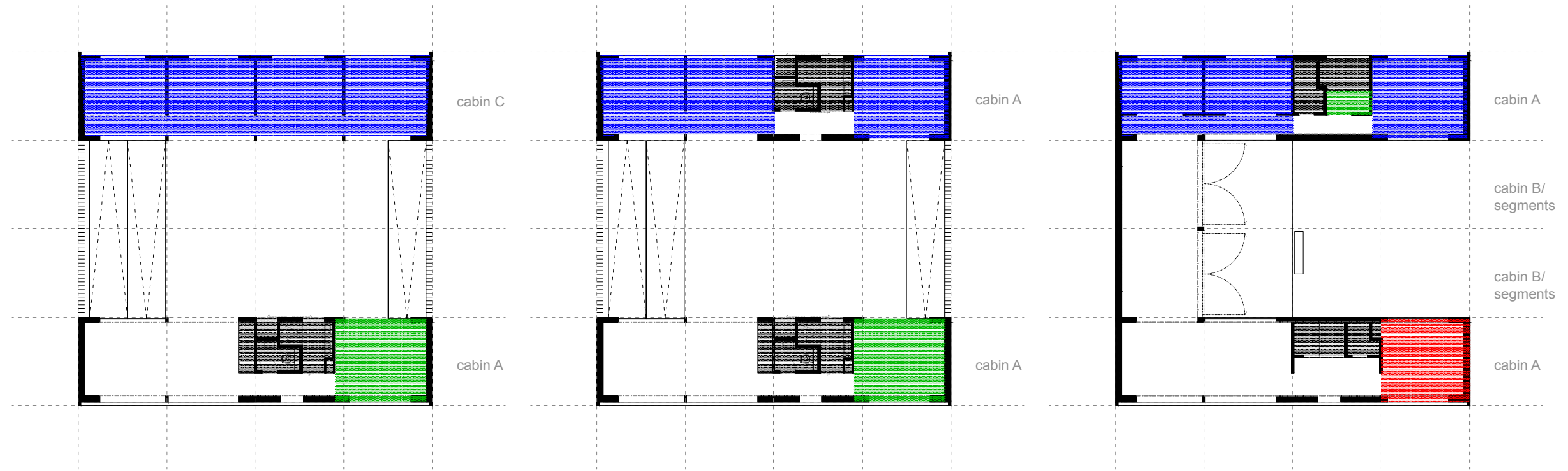
147 m² B alternative



147 m² B alternative

A / B / C cabin houses 147 m² alternatives

- open space living room with kitchen
- home office
- service background
- night zone -sleeping
- hygiene background



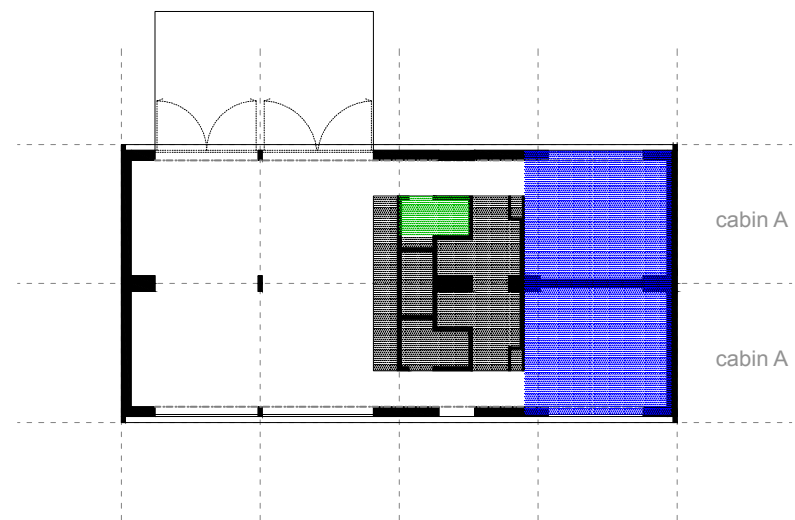
98 m² A alternative

98 m² B alternative

120 m² alternative

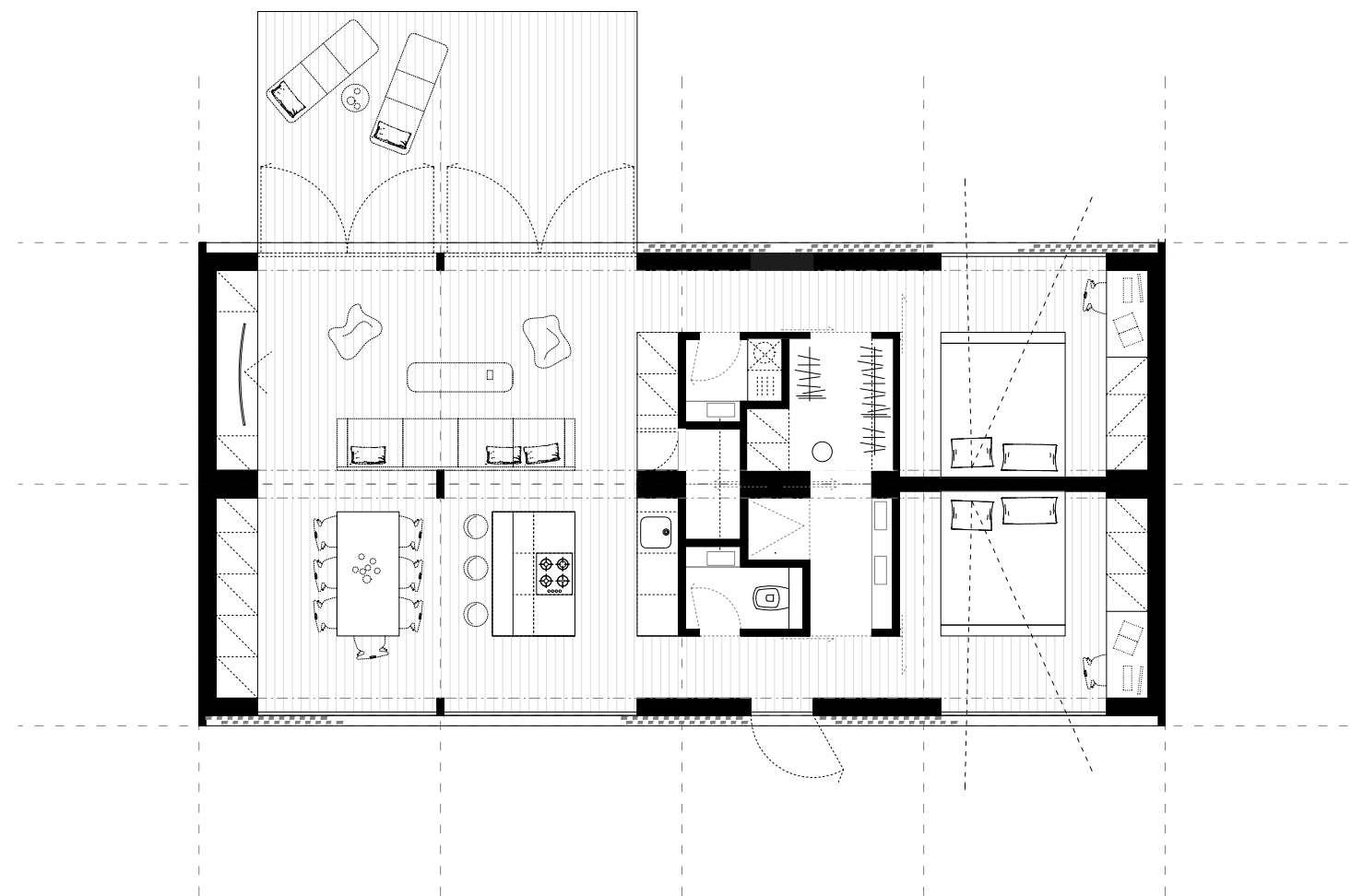
A / B / C cabin houses open shape alternatives

- open space living room with kitchen
- home office
- service background
- night zone -sleeping
- hygiene background

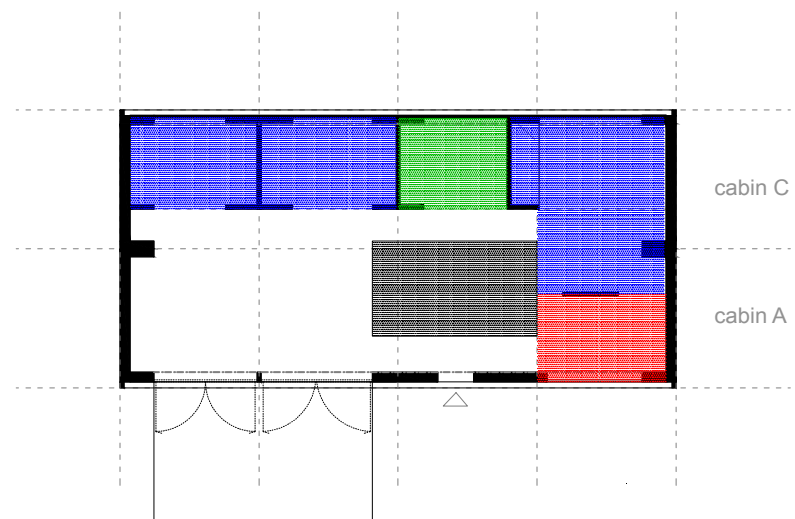


84 m2 house / comfort / A

open space livingroom with kitchen	48	m2
bedroom 2x	12	m2
bathroom	4,5	m2
toilet	1,9	m2
cellar	1,8	m2
laundry room	1,8	m2
dressing room	3,7	m2
coridors	5	m2
together	90,7	m2
+ terrace	20	m2

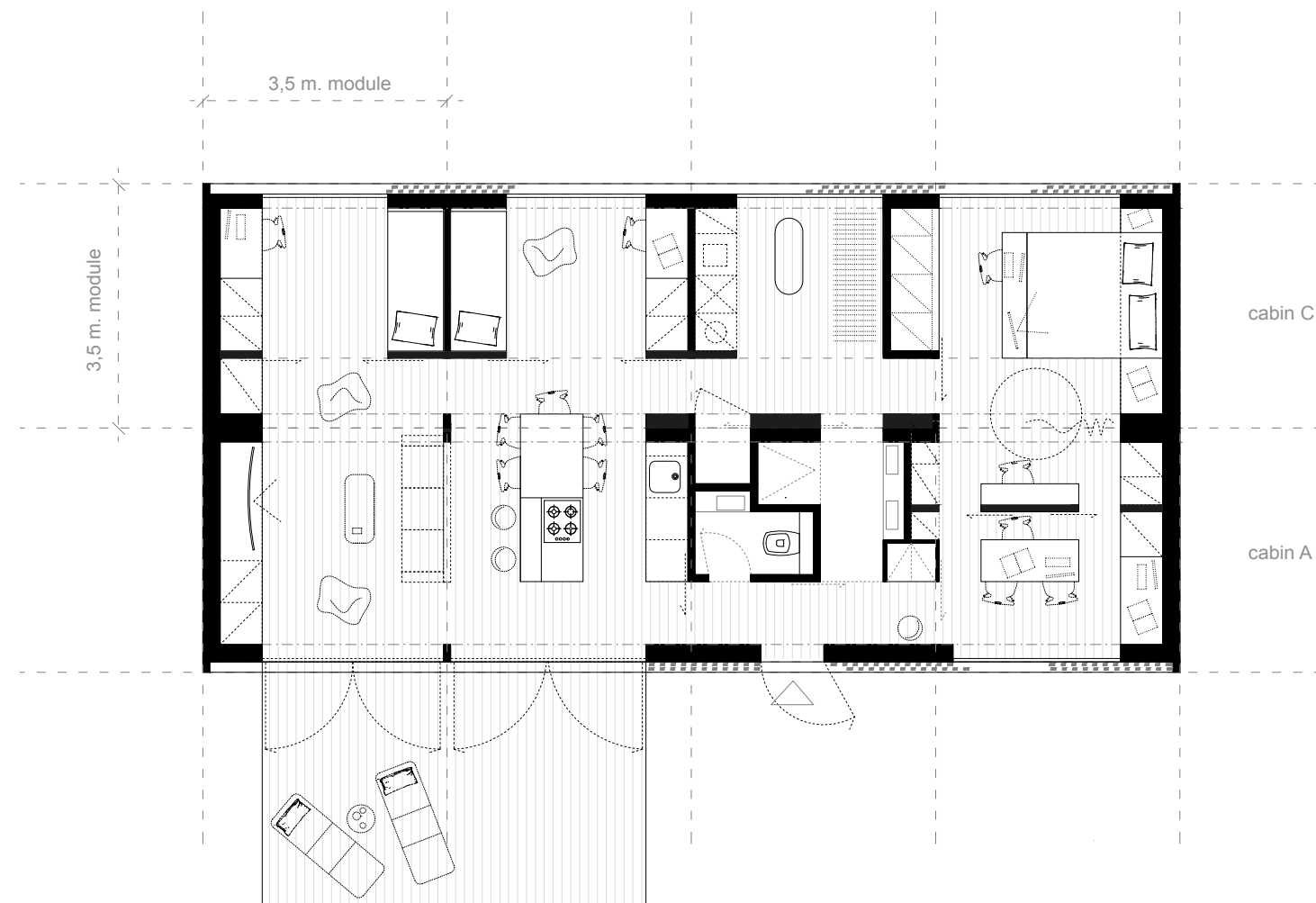


84 m2 house / comfort A

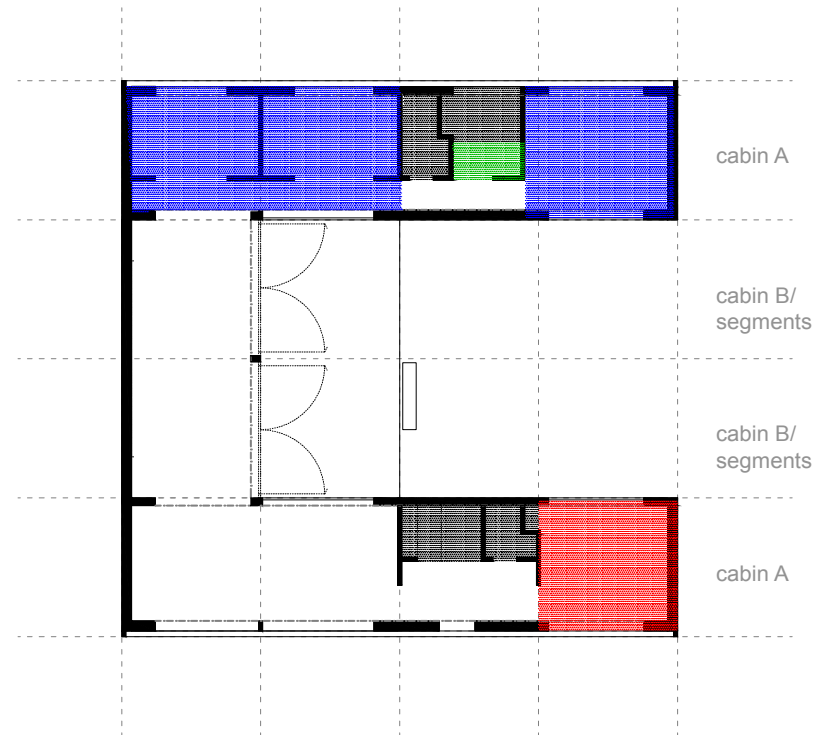


98 m2 house / effective

Open space livingroom with kitchen	30,5	m2
2 children rooms	2 x 8,5	m2
bedroom with dressing room	17	m2
bathroom	4,5	m2
toilet	1,9	m2
cellar	0,8	m2
laundry room	6,3	m2
home office	7,6	m2
coridors	5,4	m2
together	91	m2
+ terrace	20	m2

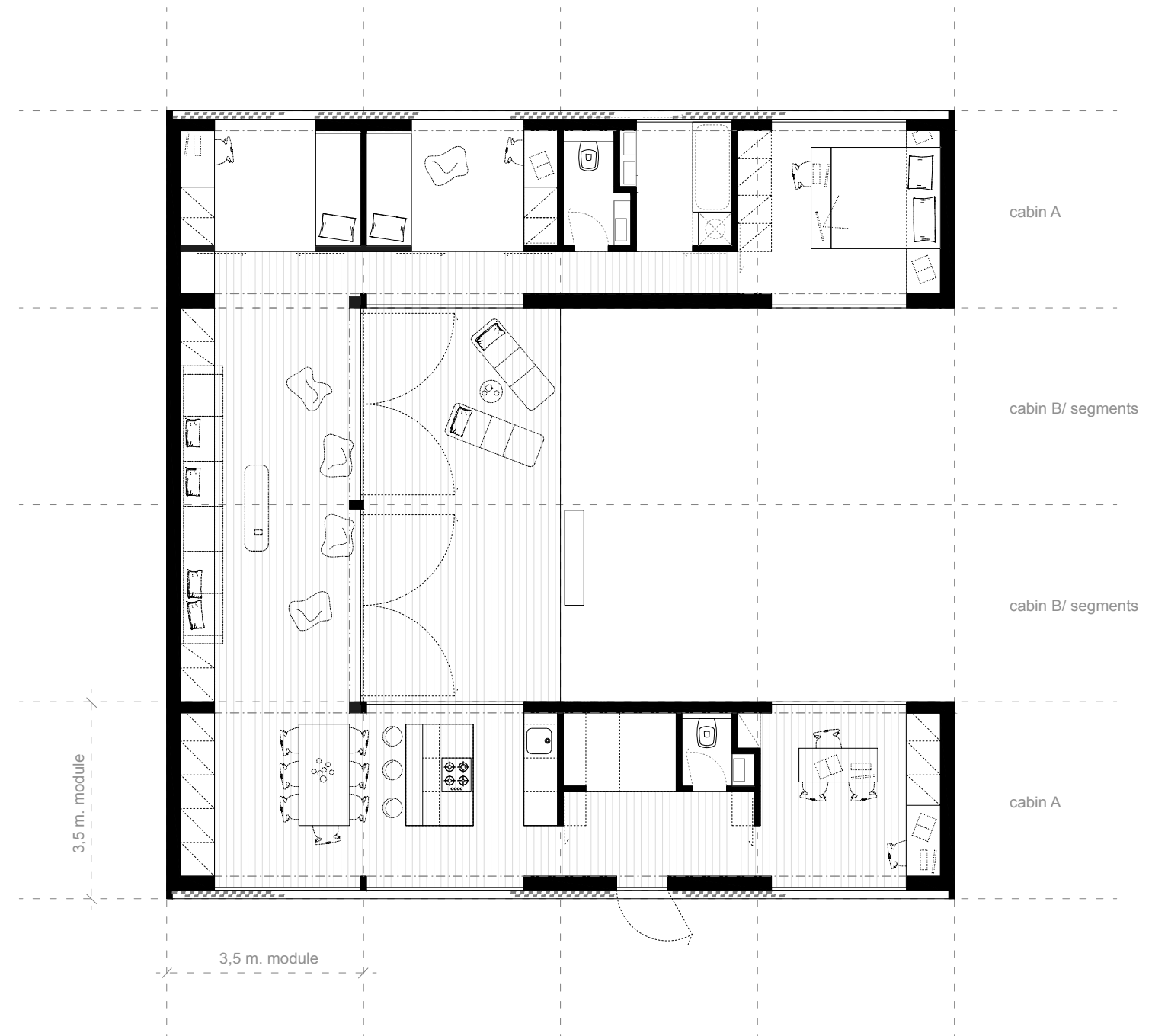


98 m2 house / efective



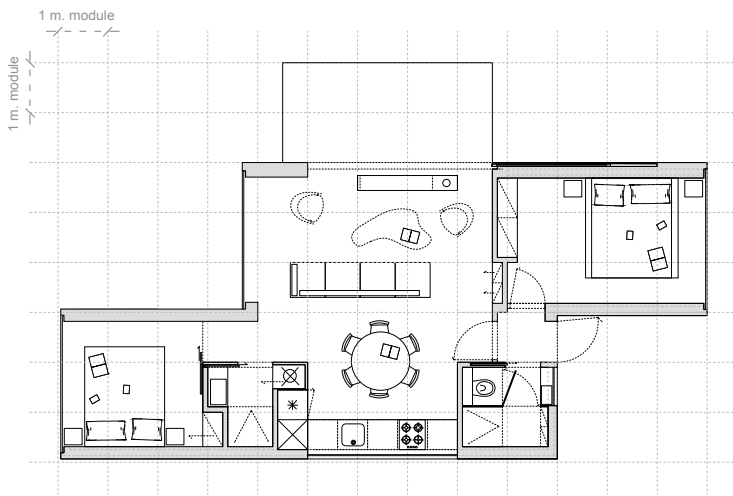
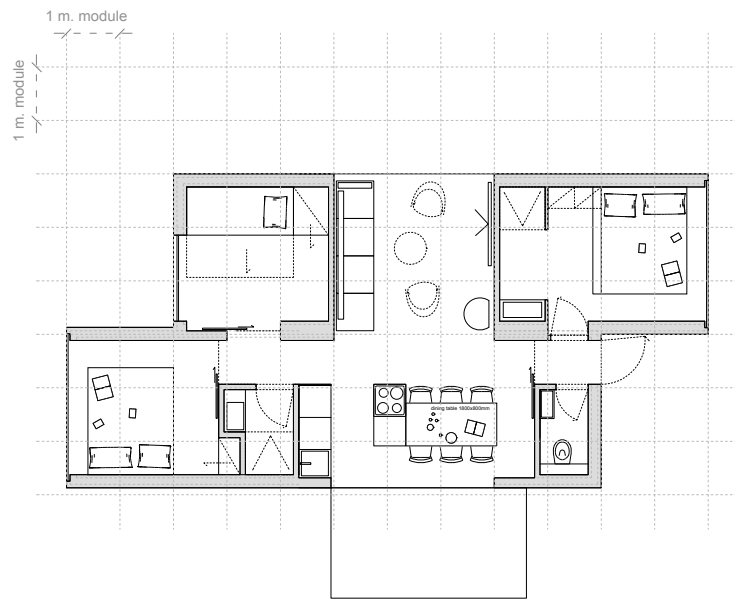
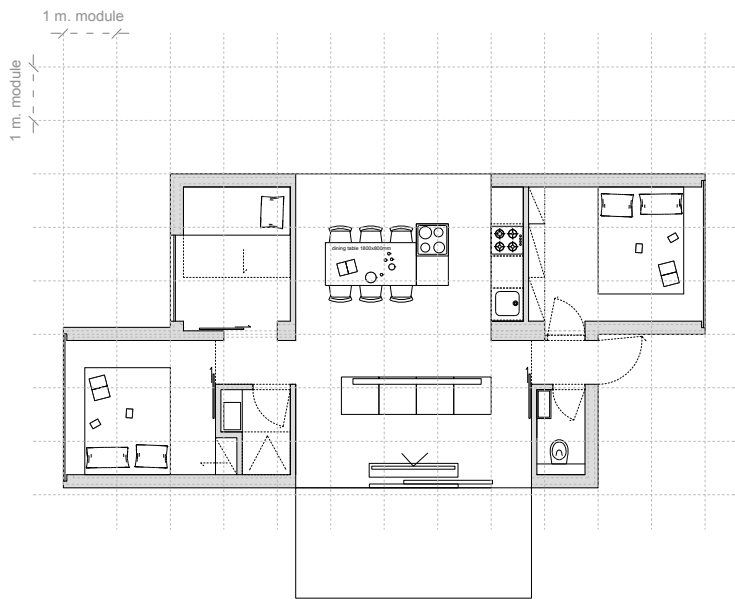
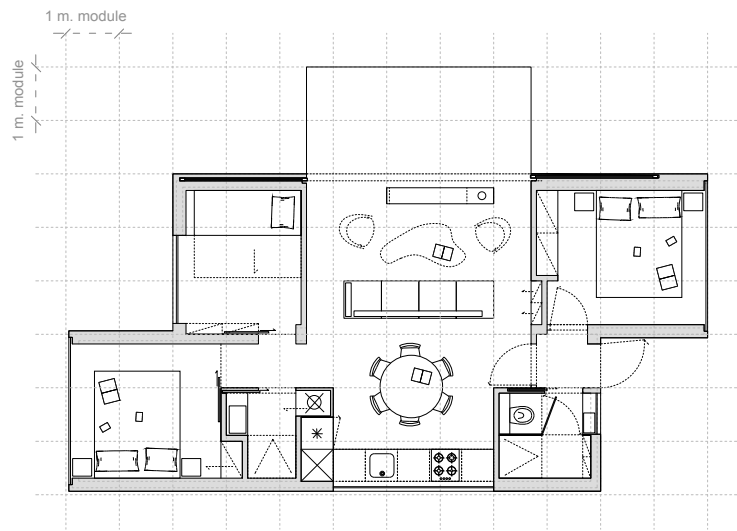
120 m2 house / U_SHAPE

Open space livingroom with kitchen	43,5	m2
2 children rooms	2 x 12	m2
bedroom	12	m2
bathroom	5	m2
toilet	2x 1,8	m2
cellar	1,5	m2
laundry room	1,5	m2
home office	12	m2
coridors	6	m2
together	109	m2
+ terrace	24	m2



98 m2 house / efective

60 m² houses alternatives



A version	60m²
open space living room with kitchen	1x
bedrooms	3x
bathrooms	2x
separated toilet	1x
closed entrance coridor	1x

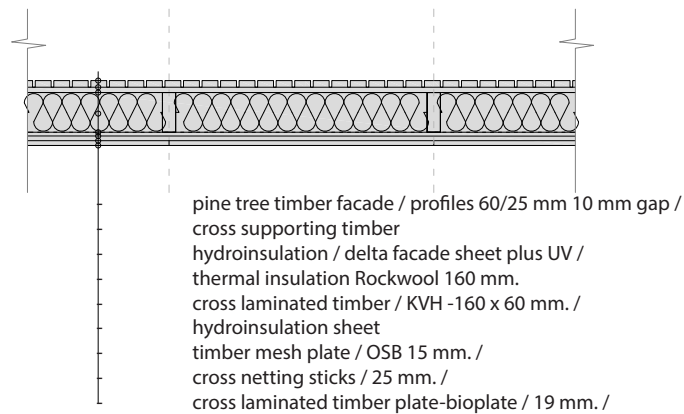
B version	60m²
open space living room with kitchen	1x
bedrooms	3x
bathrooms	1x
separated toilet	1x
closed entrance coridor	1x

C version	60m²
open space living room with kitchen	1x
bedrooms	3x
bathrooms	2x
separated toilet	1x
closed entrance coridor	1x

D version	60m²
open space living room with kitchen	1x
bedrooms	2x
bathrooms	2x
separated toilet	1x
closed entrance coridor	1x







general specifications

materials

interiour / pine tree bioplade - walls and ceiling, floor in oak, furniture in oak and pine bioplade /
 exterior / facade - pine tree or thermowood, terrace - oak or thermowood, roof - EPDM foil /

structure

skeleton /crosslaminated timber frames /
 insulation / rockwool $\lambda D = 0,035 \text{ W.m-1.K-1}$ in horizontal layers 240mm. and vertical 160mm. /
 glazings / front glazing - double glass 10+16+8 mm. /
 foundations / prefabricated plates or ground screws /

technology

heating / fireplace or electric infra panels /
 ventilation / electrical ventilation for the bathroom and toilet /
 sewage / case by case : grid connection, septic tank, chemical toilet or dry toilet /

out of grid

electricity / solar panels with batteries /
 water / tank to collect rain water with 3 times filtration before use /
 sewage / septic tank, chemical toilet or dry toilet /

The exterior facade is made of pine tree timber, dried and then deeply painted with black oil paint. It is painted white inside with the result of contrast when the shadings are open.

.....

Interested ?

Wherever your imagination takes you, Ark-Shelter makes it happen.

.....

tel. : +32 472 784 510 / info@ark-shelter.com